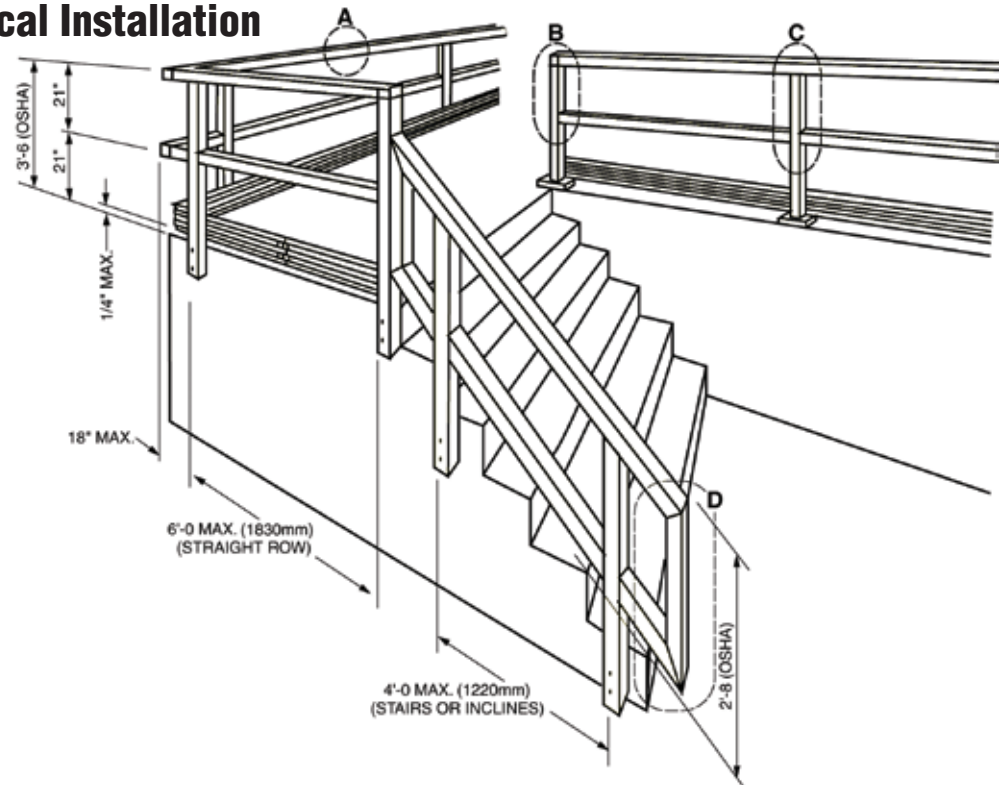


SAF RAIL™

FIELD FABRICATION GUIDE

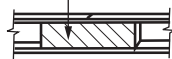
Typical Installation



Connection Details All components secured with epoxy.

A Rail Splice

6" (152mm) SQUARE PLUG



STRAIGHT

ADJUSTABLE CORNER ASSEMBLY

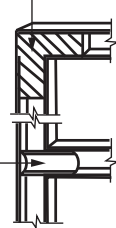


ANGLE

B End Post to Rail

4" (102mm) SPLIT TUBE CONNECTOR

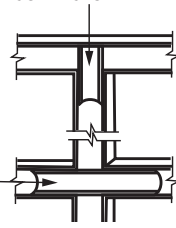
90° CORNER



C Line Post to Rail

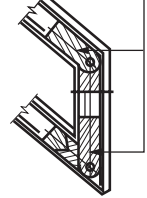
8" (203mm) SPLIT TUBE CONNECTOR

4" (102mm) SPLIT TUBE CONNECTOR



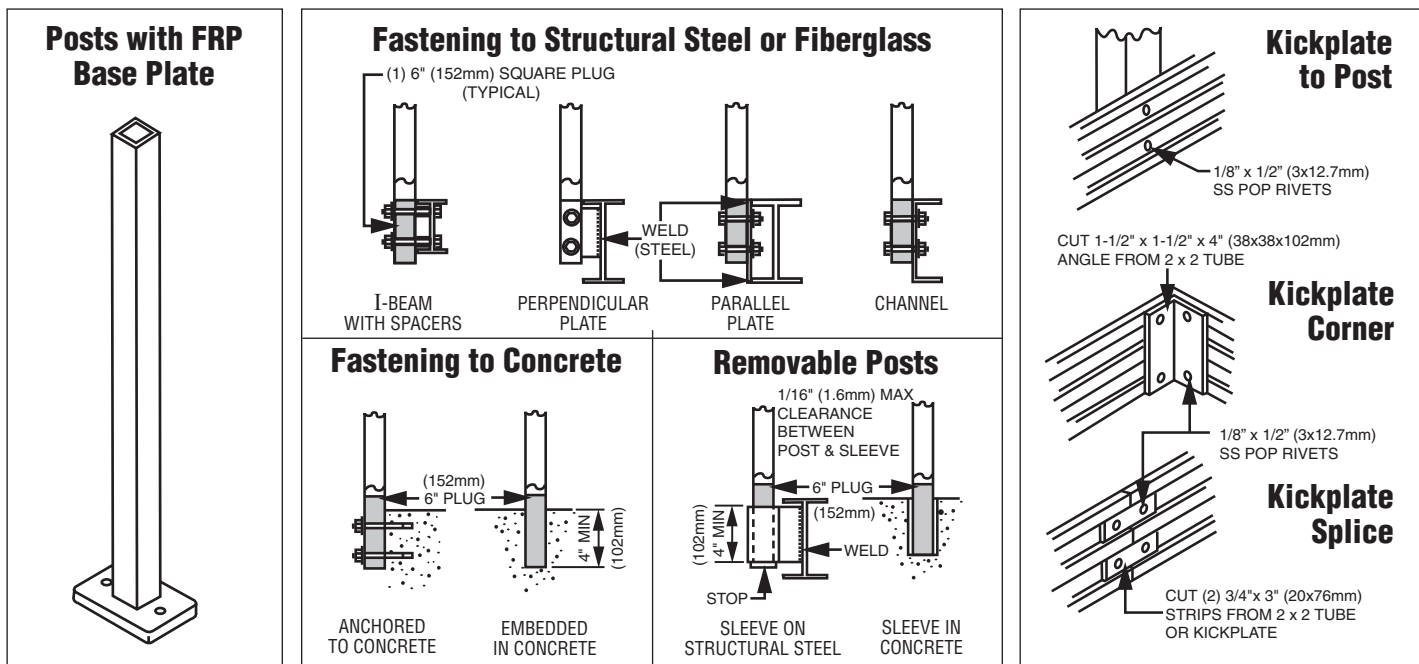
D Stair Rail Return

(2) ADJUSTABLE CORNER ASSEMBLIES



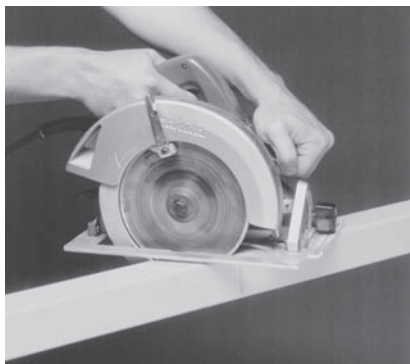


Suggested Post and Kick Plate Installation



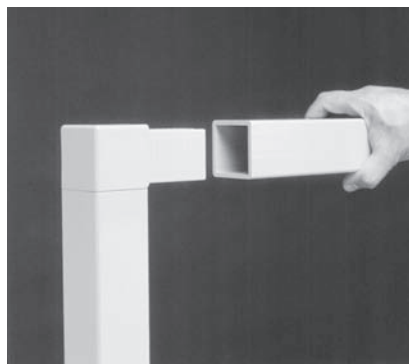
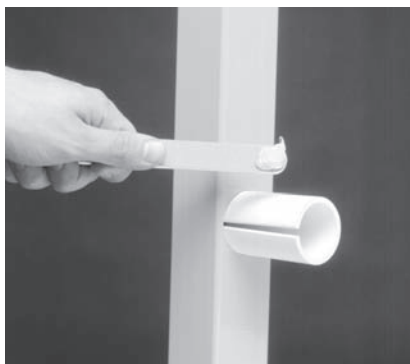
Fabrication Methods

1. Cut components to length and miter where necessary.



2. Locate and drill holes for split tube connector. Must use 1.68" (42.7mm) dia. core drill (available from the Chatfield Division).

3. Apply recommended epoxy adhesive to connectors and inside tube (available from the Chatfield Division).



4. Press together. Wipe off excess adhesive. 1/8" (3.2mm) tension pins recommended at connections for field fabrication.

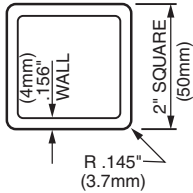
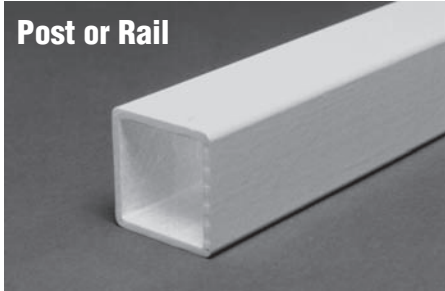
NOTE: Joints must be immobilized until cured. The recommended temperature for epoxy cure is 60°F (15.6°C) or above. Failure to use these installation and fabrication methods, including recommended epoxy adhesive and 1.68" (42.7mm) dia. core drill, may cause failure.



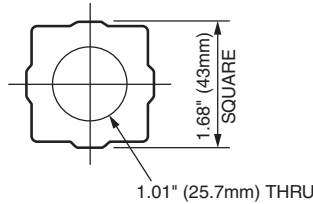
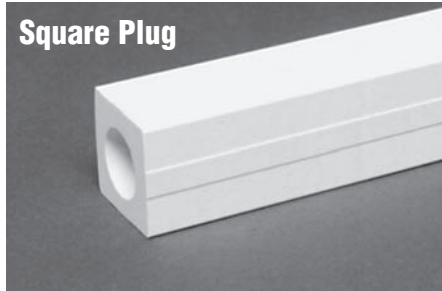
Innovative Solutions in Fiberglass

Basic SAFRAIL™ Components

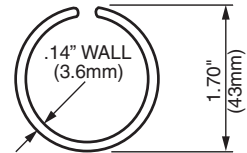
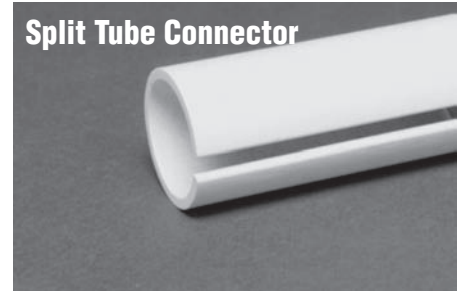
Post or Rail



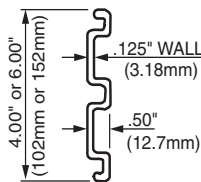
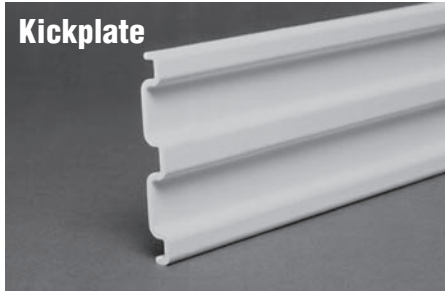
Square Plug



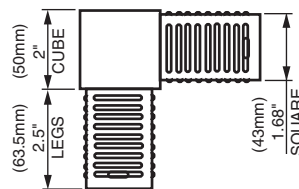
Split Tube Connector



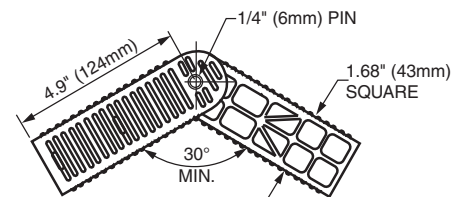
Kickplate



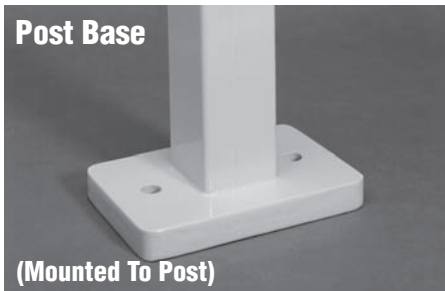
90° Corner



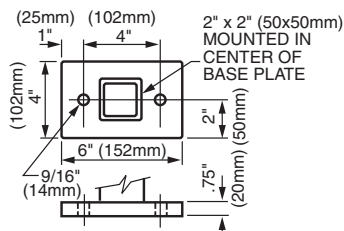
Adjustable Corner Assembly



Post Base



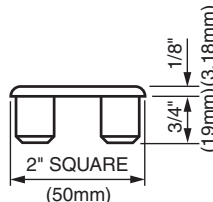
(Mounted To Post)



End Cap



Note: For Capping Tubes
(Special Construction)

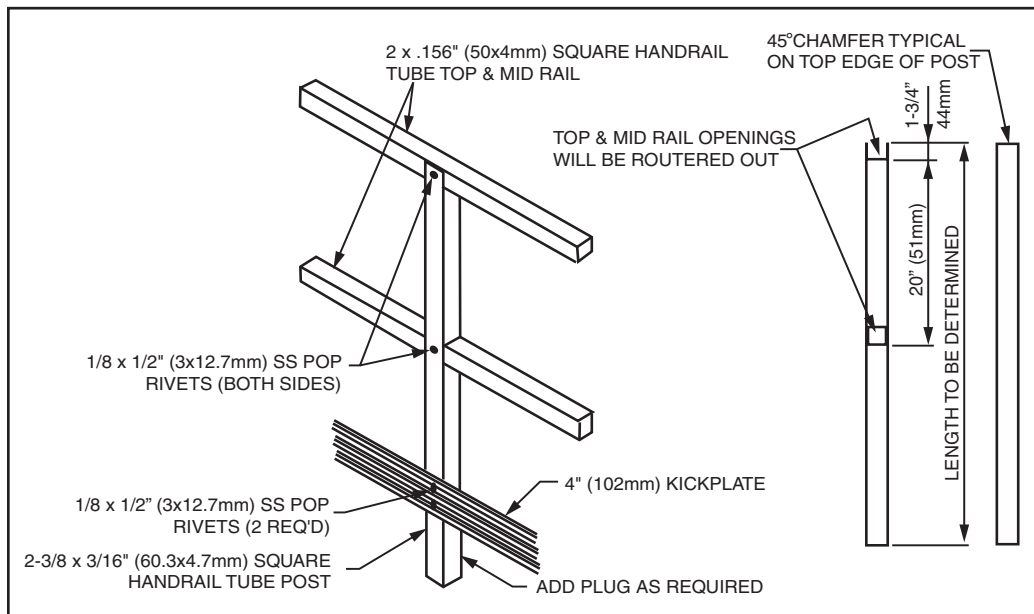


Supplementary Components

- SS Rivets
- 1/8" x 1-1/2" (3.2 x 38.1mm) Tension Pins
- Two-Part Epoxy Kits
- Mounting Bolts
- Kickplate Splice and Corner Connectors



Alternative Post Design



List of Components & Accessory Items

- 2" x 2" x .156" (50 x 50 x 4mm) Square Tube
Yellow Polyester Fire Retardant, UV Inhibited @ 240" (6096mm)
- 2-3/8" x 2-3/8" x 3/16" (60.3 x 60.3 x 4.7mm) Square Tube
Yellow, Polyester Fire Retardant, UV Inhibited @ 240" (6096mm)
- 4" Kickplate, Yellow, Polyester Fire Retardant, UV Inhibited @ 240" (6096mm)
- 6" Kickplate, Yellow, Polyester Fire Retardant, UV Inhibited @ 240" (6096mm)
- FRP Base Plate with Post — Total Height 40" (1016mm) (Polyester)
- 2-3/8" x 2-3/8" x 3/16" (60.3 x 60.3 x 4.7mm) Alternate Handrail Post, Routed Out, No Bottom Plugs
- Black End Caps
- Adjustable Corner Assembly (Total Assembly)
- 90° Corner Plug
- Kickplate Splice
- Kickplate 90° Splice
- Split Round Tube 8" (203.2mm) Length
- Split Round Tube 4" (101.6mm) Length
- Split Round Tube 144" (3657.6mm) Length
- 6" (152.4mm) Square Plug
- 144" (3657.6mm) Square Plug
- SS Rivets
- 1/8" x 1-1/2" (3x12.7mm) Tension Pins
- Epoxy Kits — 1 Pint Yellow
- Core Drill (1.68" [42.7mm] Dia.)
- 1/8" x 1/2" SS Pop Rivets
- 90° Corner Sample
- Tee Sample

TOOLS



- Electric Drill
- Circular Saw
- Hammer
- Sandpaper
- Core Drill & 1/8" (3.2mm) Drill Bits
- Circular Saw Blades

NOTE: Tungsten carbide-tipped core drill bit & 7" (177.8mm) grit-edged tungsten carbide circular saw blades are recommended (available from Chatfield Division).



GEF Incorporated