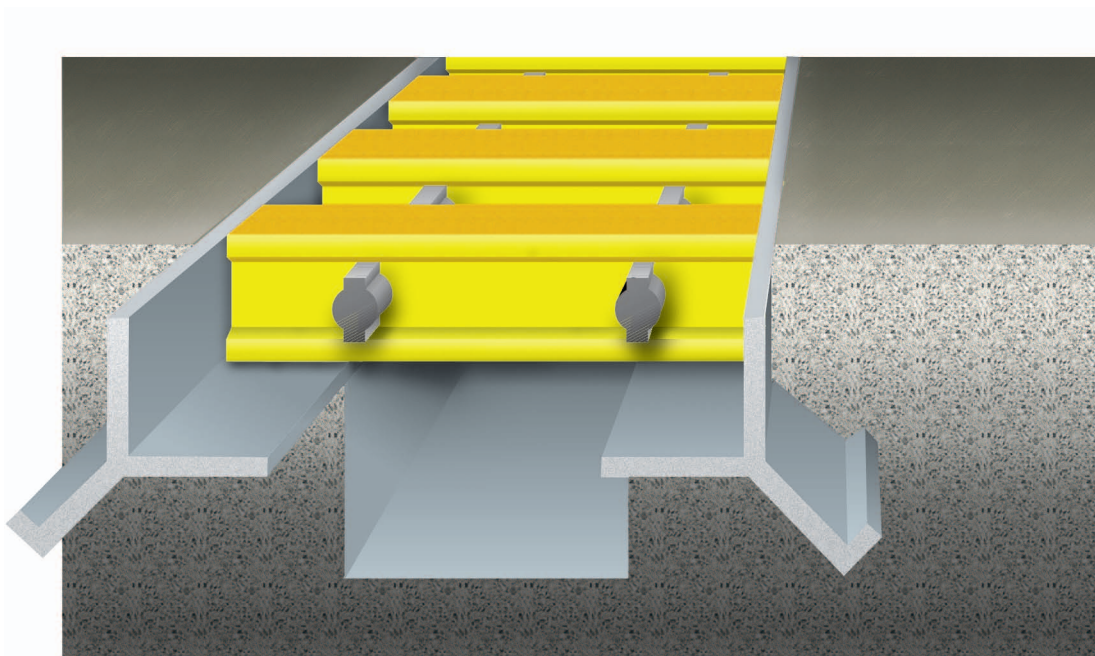




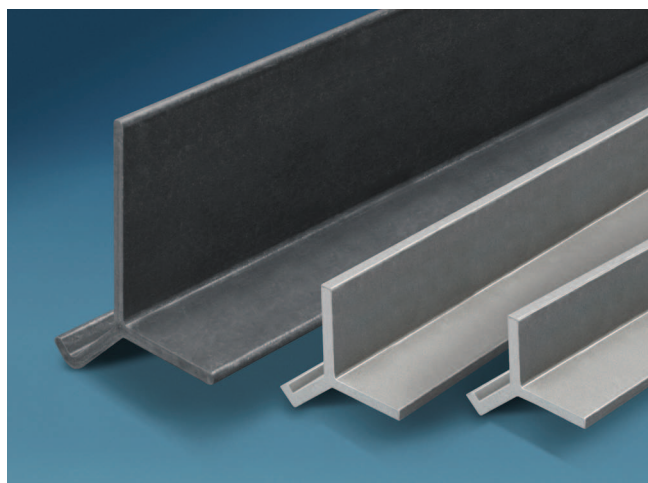
**GEF Incorporated**  
*Innovative Solutions in Fiberglass*

# FIBERGLASS CURB ANGLE

**FOR USE WITH DURADEK®, DURAGRATE® AND DURAGRID®  
GRATING, CUSTOM DECKING AND COVER PROFILES**



- **Corrosion Resistant**
- **Low Conductivity**
- **High Strength**
- **Fire Retardant**
- **Easy to Install**



Strongwell's curb angle has a built-in, continuous angle that locks into concrete, eliminating the need for individual anchors.

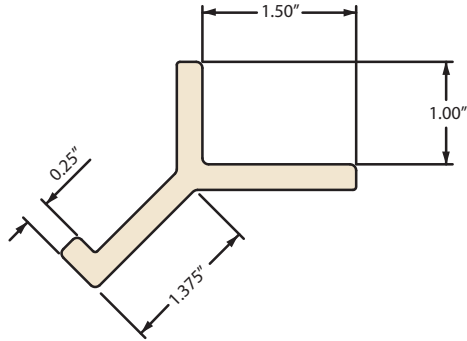
Fiberglass curb angle is engineered using a surfacing veil and fire retardant gray vinyl ester, except for the 4", which is a fire retardant slate gray vinyl ester. This unique combination produces the superior strength, stiffness, wear protection and long-term corrosion resistance. Curb angle is available in 20' length.



## Availability

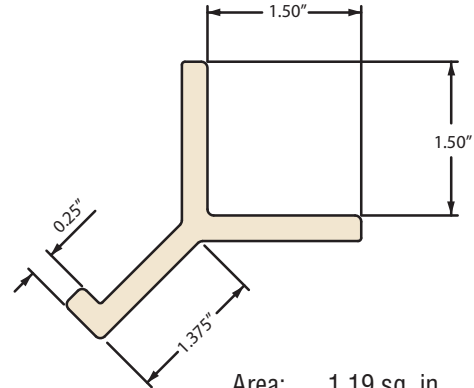
Fiberglass curb angle is available in four sizes. Other sizes can be custom manufactured. Contact Strongwell or ask your local distributor about availability.

### 1" Curb Angle



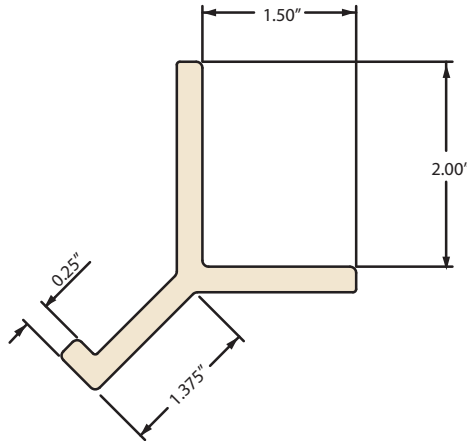
Area: 1.06 sq. in.  
Weight: 0.88 lbs./ft.

### 1½" Curb Angle



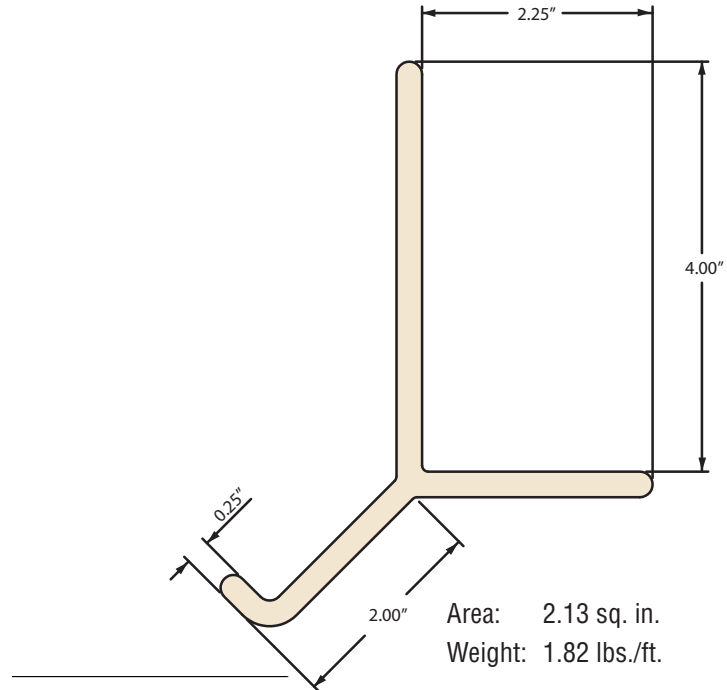
Area: 1.19 sq. in.  
Weight: 0.98 lbs./ft.

### 2" Curb Angle



Area: 1.31 sq. in.  
Weight: 1.09 lbs./ft.

### 4" Curb Angle



Area: 2.13 sq. in.  
Weight: 1.82 lbs./ft.



## GEF INCORPORATED

6497 Winfield Rd  
Winfield, WV 25213  
(Office) 304-755-1600  
(Toll Free) 800-784-0529  
(Fax) 304-755-3150

[www.gefinc.com](http://www.gefinc.com)